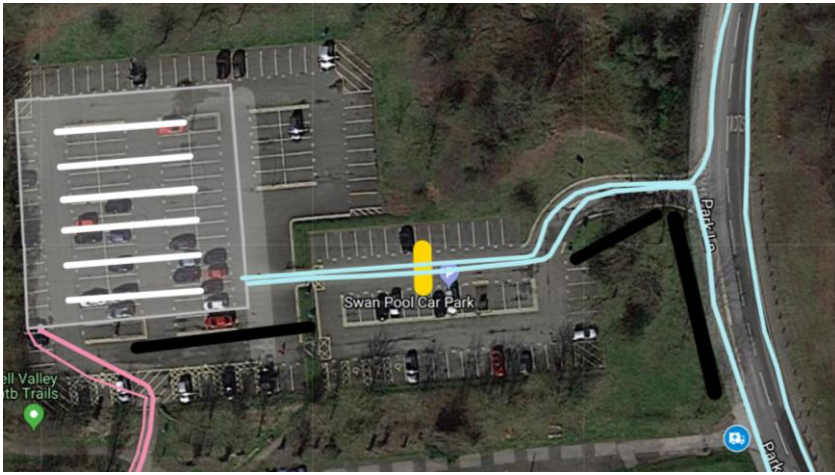


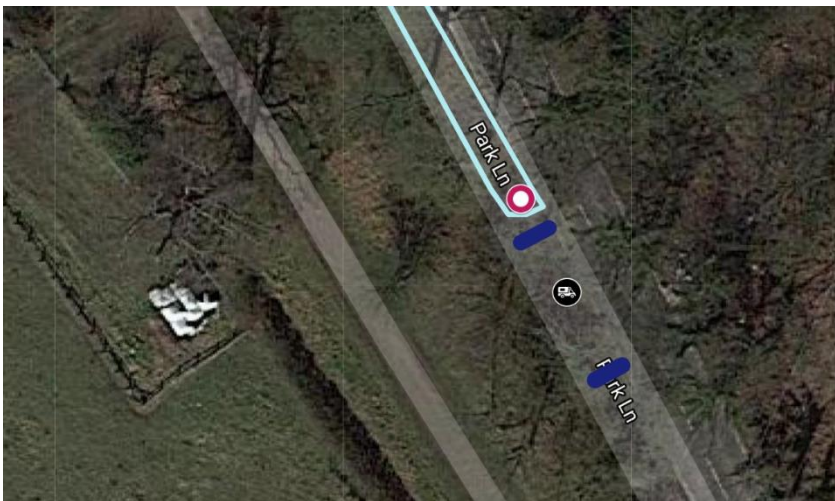
Sandwell Triathlon – Cycle Course



Bikes are inspected prior to being racked in Transition to make sure they meet the BT safety requirements. Athletes must put on their helmets before unracking. Then they push their bikes over the Mount line (yellow) before mounting their bikes and riding up the slip road and turning right to join the main route (at all times keeping to the RHS). The whole of this carpark area is cordoned (to create two separate lanes). A cordoned filter system guides the cyclists safely onto the main loop route.

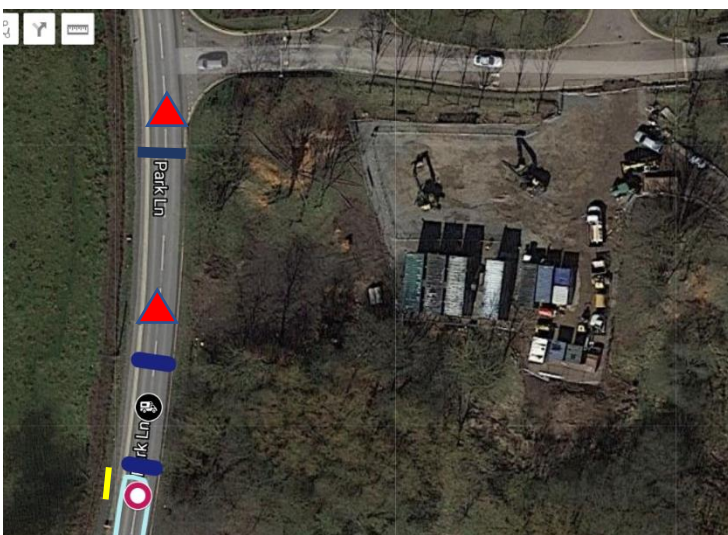


The two lanes are separated the whole route by large cones. The main area of concern on the course is the pathway that crosses at traffic lights from Forge Mill to Swan Pool (Purple line). This is treated as our no.1 marshal point. A rope system is incorporated (Marshal each side holding one end of a rope, the other tied to one side of entry). This blocks the way when unsafe to cross. Advance warning signs warn of this controlled crossing point. The TSS Top Turn Point is located not far past here.



Top Turn Point (everyone except TSS).

A Large double cone (cone on cone) marks the turn point (Marshalled point). As its uphill athletes approach at a slower speed turning anticlockwise around it. 4m away there are barriers across the road. A few minutes after this the Road Closure companies lorry is parked in such a way as to block whole road off (Driver with vehicle). Further up the road there are additional barrier and Road closed signs.



Bottom Turn Point. As this is not long after the down hill section cyclists potentially could be going quite fast. As well as signs warning to slow down this is highlighted in the race briefing. A wooden ramp is located in the gutter as some athletes in the past have got their line wrong and crashed into kerb (yellow). A Large double cone (cone on cone) marks the turn point (Marshalled point). 4m away there are barriers across the road. A few minutes after this the Racking lorry is parked in such a way as to block whole road off. Further up the road there are additional barrier and Road closed signs. Craig has keys.